

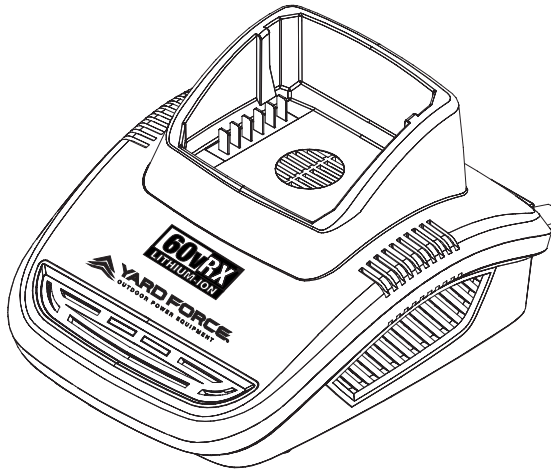


YARD FORCE[®]
OUTDOOR POWER EQUIPMENT

YF60VRX4A-CHG
YF60VRX2A-CHG

60v Lithium-Ion Battery Charger

OPERATOR'S MANUAL



Our Customer Service staff is ready to provide assistance.

In the case of a damaged or missing part, most replacement parts ship directly from Merotec USA in Atlanta or from one of our service partners in the US.

For immediate help with assembly, or for additional product information, email support@MerotecUSA.com or call 866-902-9690 M-F 8:30am – 5:00pm ET. More information can be found on www.YardForceUSA.com.



SAVE THIS MANUAL FOR REFERENCE



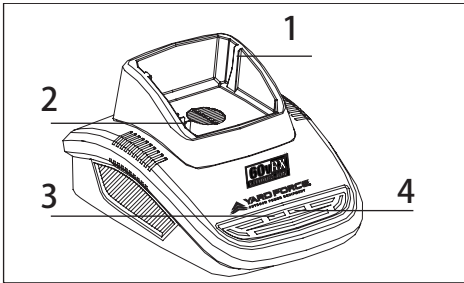
You will need this manual for safety instructions, operating procedures, and Warranty. The original sales receipt is required for warranty service.



TABLE OF CONTENTS

Product features	3
Technical data.....	3
Intended use.....	3
Warning symbols.....	3
Product description and specifications.....	4
Safety notes.....	4
Operation.....	5
Maintenance and service	6
Disposal	6
Trouble shooting.....	7
Warranty	8

PRODUCT FEATURES



1. Battery pack guide groove
2. Battery pack connect terminals
3. Green LED indicator
4. Red LED indicator

TECHNICAL DATA

Model	YF60VRX2A-CHG	YF60VRX4A-CHG
Input	100-240 V, 50/60 Hz,	100-240 V, 50/60 Hz,
Output	63 V d.c. 2.5 A	63 V d.c. 4 A

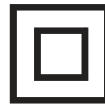
WARNING SYMBOLS



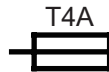
Before any use, refer to the corresponding paragraph in the present manual.



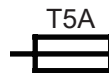
The charger is for indoor use only.



Double insulation



Protective 4A limited



Protective 5A limited

INTENDED USE

The battery charger YF60VRX2A-CHG/ YF60VRX4A-CHG only can be matched for Yard force 60V Li-ion battery pack YF60VRX2.5-BAT/ YF60VRX4.0-BAT.



Do not expose and operate the tool in rain.

WARNING SYMBOLS PRODUCT DESCRIPTION AND SPECIFICATIONS



WARNING!

IMPORTANT SAFETY INSTRUCTIONS

1. **SAVE THESE INSTRUCTIONS –**
This manual contains important safety and operating instructions for battery charger YF60VRX4A-CHG & YF60VRX2A-CHG.
2. Before using battery charger, read all instructions and cautionary markings on battery charger, battery, and product using battery.
3. **CAUTION –** To reduce risk of injury, charge only YF60VRX2.5-BAT & YF60VRX4.0-BAT batteries. Other types of batteries may burst causing personal injury and damage.

SAFETY NOTES

1. Use only YardForce 60V Li-ion battery pack YF60VRX2.5-BAT & YF60VRX4.0-BAT. Do not use the original charger on other Li-ion batteries or on any other type of battery—fire or explosion may occur.
2. Check the battery charger, cable and plug each time before using. Do not use the battery charger when defects are detected. Do not

open the battery charger yourself and have it repaired only by qualified personnel using original spare parts.

3. The charger is designed to use standard household 100-240 V~ 50/60Hz power source. The charger's plug must match the outlet. Never modify the plug in any way. Unmodified plugs and matching outlets will reduce risk of electric shock.
4. Do not abuse the cord of charger. Never use the cord for carrying, pulling or unplugging the charger. Keep cord away from heat, oil, sharp edges or moving parts. Damaged or entangled cords increase the risk of electric shock.
5. Make sure the charger cord is located so that it will not be stepped on, tripped over, or otherwise subjected to damage or stress.
6. Keep the battery charger clean. Contamination may cause the danger of electric shock.
7. Protect the battery charger away from rain and moisture. The penetration of water in a battery charger increases the risk of electric shock.
8. Do not operate the battery charger on easily inflammable surfaces (e.g. paper, textiles, etc.) or in combustible environments. There is danger of fire due to the heating of the battery charger during charging.

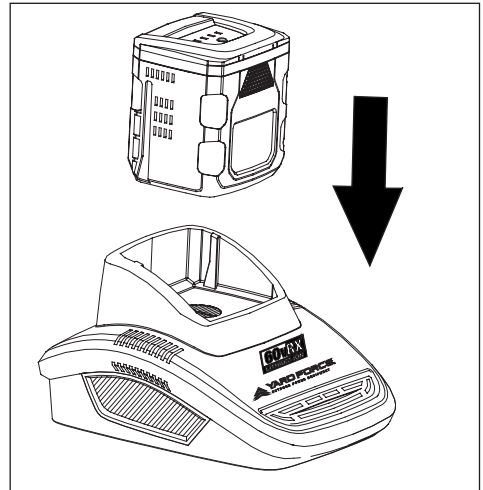
9. The temperature range over which the battery pack can be charged is typically from 32 °F to 113 ° F. Therefore, charging efforts outside the prescribed temperature range may automatically be blocked by the protection circuitry of the battery pack. Longest life and best performance can be obtained if the battery pack is charged in the normal room condition.
10. Disconnect charger from the power supply when not in use. This will reduce the risk of electric shock or damage to the charger if metal items should fall into the opening.
11. This tool is not intended for use by persons (including children) with reduced physical, sensory or mental capabilities, or lack of experience and knowledge, unless they have been given supervision or instruction concerning use of the appliance by a person responsible for their safety.
Children should be supervised to ensure that they do not play with the appliance.
12. Cleaning and user maintenance of the battery charger shall not be made by children without supervision.



WARNING: Charger terminals and related accessories may contain lead and lead compounds, chemicals known to the State of California to cause cancer and birth defects or other reproductive

harm. Wash hands after handling. For more information, go to www.P65Warnings.ca.gov.

OPERATION



Note:

- A new battery pack is supplied partially charged. To ensure the best performance, charge the battery completely before first use.
 - Make sure the main voltage is the same as rating label which is located on the charger.
 - Remove the battery pack from the charger after it has been fully charged.
1. Connect the charger to a power supply, the red and green LED lights will flash alternately for about 2 seconds. And then the red LED light on the charger will be on.



2. To insert the battery pack into the charger, align the grooves on the battery pack with the raised ribs in the opening of the charger. Then press the battery pack downward with a moderate force.
3. Once the battery pack is correctly located in the charger, the green LED light of the charger will flash continuously during normal charging.
4. When charging is complete, green LED light of the charger will be on.
5. If you encounter one of following kind of situations, the red LED light of charger will flash.
 - Wrong communication. It refers to poor connection between charger and battery pack.
 - Faulty with battery pack. The battery pack need to be repaired by the customer service center.
6. The charger has over-temperature protection. When the red and green LEDs flash alternately for more than 3 seconds, please wait until the red LED lights up, and then the charger resumes normal work.

MAINTENANCE AND SERVICE

- **Occasionally clean the charger using a soft, clean and dry brush.**
When the charger is no longer operative, please refer to an authorized after-sales service centre.

DISPOSAL

Battery chargers, accessories and packaging should be sorted for environmental-friendly recycling. Do not dispose of battery chargers into household waste!

TROUBLE SHOOTING

Symptom	Cause	Corrective Measure
Battery pack can not be charged	Battery not (properly) inserted.	Properly insert battery pack into charger till the red LED lights on.
	Battery contacts contaminated.	Clean the battery contacts or replace the battery pack.
	Battery pack defective.	Replace a new battery pack.
Charger no response when power on	Mains plug of battery charger not plugged in (properly)	Insert mains plug (fully) into the power socket.
	Power socket, mains cable or battery charger defective	Check the mains voltage; have the battery charger checked by an authorized after-sales service or qualified agent.

WARRANTY

Product Warranty

Please keep your original purchase receipt in a safe place as proof of purchase. Warranty coverage for this product must be verified by the original purchase receipt.

The warranty period begins on the day that the product was purchased from an authorized retailer of Yard Force products. Warranty coverage only applies to the original purchaser and is not transferrable. Warranty coverage is only provided on products purchased from authorized Yard Force retailers.

Warranty only applies to products purchased and OPERATED in the USA. Any product purchased or operated outside of the USA is not covered by any warranty.

(1) Five-Year Warranty on Yard Force Outdoor Power Equipment and Three- Year Warranty on 60vRX Battery Pack and Adapter

The Yard Force Outdoor Power Equipment has a 5-Year Limited Warranty and 60vRX Battery Pack and charger has a 3-Year Limited Warranty from the date of purchase against manufacturer defects for residential use only. Commercial use voids the warranty. This warranty does not cover accidental damage, unreasonable use, normal wear and tear, neglect or non-compliance with the Operating, Safety and Maintenance Instructions. All service, outside of normal maintenance as described in this manual, must be done by an authorized service technician. Any unauthorized service or changes to the original configuration of this product will void the warranty. All parts and accessories used on and with this product must be manufactured and/or authorized by Merotec Inc.

(2) Ninety-Day Warranty – Accessories

The accessories included are warranted against manufacturer defects for residential use only for a period of 90 days from date of purchase. Warranty does not cover loss of use or other consequential damages arising from any of the above, nor does it cover repairs made or attempted by unauthorized persons. This warranty is void if the product is used for commercial, rental or industrial purposes.

Certain parts, attachments and accessories are subject to normal wear and tear and are excluded from the warranty.

Service and Warranty Claims Process

Contact the Yard Force Support Center toll-free at **(866) 902-9690 Monday-**

Friday between 8:30 AM and 5:00 PM Eastern Time for service and warranty support.

Yard Force Service Support agents can help you troubleshoot problems over the phone to get you back up and running as quickly as possible. In the situation where service or warranty inspection is needed, please follow these steps:

1. Call Yard Force at **(866) 902-9690 Monday-Friday between 8:30 AM and 5:00 PM Eastern Time.**
2. Send in proof-of-purchase and serial number (if applicable) to confirm warranty Coverage as directed by Yard Force.
3. If service or a warranty evaluation is requested, Yard Force will provide an RGA number that should be used in all communications with Yard Force and is required to be indicated on the product itself and on the outside of the box.
4. All shipments to Yard Force must have an RGA number. Any shipment received that does not have an RGA number clearly marked on the outside of the box will be refused.
5. All shipments must be sent pre-paid, Yard Force does not pay for any shipping costs for service or warranty evaluation. Yard Force is not responsible for any packages that are lost by carrier. We recommend that shipments are made by a carrier that provides tracking and delivery confirmation.

For more information or to ask questions, please call toll-free **(866) 902-9690 Monday-Friday between 8:30 AM and 5:00 PM Eastern Time.**

SAVE THESE INSTRUCTIONS



1-866-902-9690



support@merotecusa.com

Need Help?

Please do not return the product to the place of purchase yet.
We're here to help and take care of all your needs.

Contact our Customer Care Center in Atlanta, GA for help with:

- Product assembly or use
- Missing or damaged parts
- Troubleshooting

You can also visit our website to download
owner's manuals and get additional product information.
Visit www.YardForceUSA.com, or call our
toll free hotline: 1-866-902-9690 M-F 8:30am – 5:00pm ET